



---

## PRODUCT SPECIFICATION SHEET

---

### Product Name

FÖTERA®

### Company of Manufacture

Creative Form Liners, Inc.  
3411 Windom Road  
Brentwood, Maryland 20722

### Contact Information

p. (301) 864-3676  
f. (301) 699-0389  
info@creativeformliners.com  
www.creativeformliners.com

### Product Description

**Basic Use:** The FÖTERA® product is structural concrete terrazzo produced from a unique process to cast *any* image or design in full color. Used for indoor and outdoor applications, the solid structure of this concrete terrazzo means that all color, images, and designs are present throughout the cast before being reinforced with backing material. Common applications include wall treatments and hardscapes, but the material is not limited to architectural treatments and also can be used to enhance highway infrastructure and commercial and residential applications.

**Advantages:** We cast pigmented color against color, so there is no need for expensive metal divider strips that expand and contract at different coefficient ratios when using cementitious terrazzo outdoors, resulting in cracked concrete and higher maintenance costs.

### Cost

Because each project is custom, there are no “standard” prices. There are many factors that affect price and these need to be considered before we can provide a cost estimate. Many factors affect cost: overall size, design complexity, quantity, cast-in-place vs. precast, panel size, installation needs, architectural vs. hardscape, indoor vs. outdoor, and 2D vs. 3D.

*Call us for a free estimate! (301) 864-3676*

### Technical Data

**Composition:** water, cement, pigment, aggregate (recycled or new), and other proprietary ingredients

**Dimensions:** varies according to the specifications provided by the client

**Weight:**  
+/-200 lbs/ cubic foot

**Typical Compressive Strength Test Results:**  
+/- 7000 psi after 56 days

### Warranty

The Manufacturer warrants FÖTERA® products for one year after the date of manufacture.

### Technical Assistance

Consult Creative Form Liners, Inc. using the above contact information if you have any questions regarding the maintenance of your FÖTERA® structural concrete or epoxy resin product.

### Shipping, Handling and Installation

#### **Shipping and Safe Handling:**

- The panels should always be handled with care.
- Under no circumstances should panels ever be shipped flat, even for short distances. They must always be shipped on edge against an A-frame with the concrete face side facing out. Dunnage, padding, or some other protective material should be used on the edge receiving the weight.
- The panels should never be stacked on top of each other even for a short time.
- All handling of the panels must be done with gloves or hands free of grease.

## Unpacking and Installation Recommendations:

- Unless pick points have been specified, always use straps to maneuver the panels.
- If wrapped in plastic, always leave the plastic in place as long as possible. Once installed, cut plastic away.
- Do not attempt to move panels with pry bars or 2x4's. Even though this is structural concrete, it can chip and break on the edges if enough force is applied.
- Once installed, fill joints with caulk or comparable.

## Maintenance

FOTERA® concrete should be regularly inspected for any damages such as chips, cracks, breakages or discoloration. This should be done annually, but the client may find it necessary to increase this frequency based upon the product's usage.

## Coloring and Aggregates

- Once cast and cured FÖTERA® concrete requires *low to no maintenance* and will last generations beyond traditional stained or painted images.
- When using recycled glass or other aggregates, FÖTERA® concrete also helps your projects earn LEED credits for green and sustainable design, according to the United States Green Building Council.

## Finishing

- When integrated into hardscapes, such as a sidewalk, a pedestrian balcony, or other walking surfaces, we grind the FÖTERA® concrete to an 80-grit surface so that it is not slick, and then we seal it with 511 Seal and Enhance Impregnator to chemically bind the materials.
- When FÖTERA® is integrated into architecture for façades, walls or benches, we grind it to a smooth finish, polish it to the desired shine and seal it.
- As with other stone surfaces, it may be necessary to reseal the product surface with an impregnator every few years to enhance color. Please see impregnator data sheets for proper resealing methods.
- If the client wishes to use another type of sealer or surface protecting product, always check compatibility with manufacturers of both the 511 Seal and Enhance Impregnator and the other product prior to use.

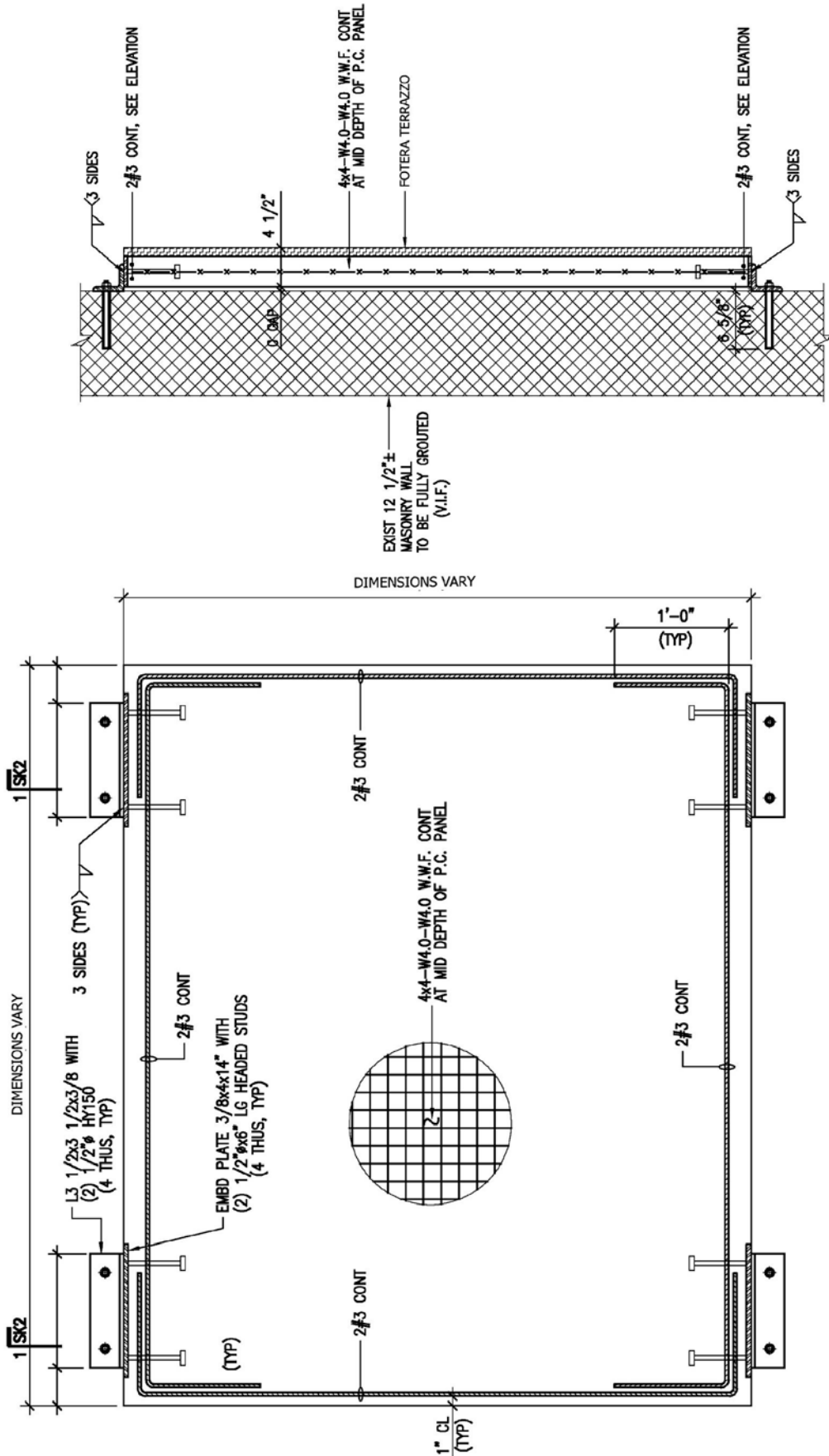
## Cleaning

- **DO** regular cleanings as necessary. A hose or pressure washer can be used to clean off the surface, but the pressure washer should remain at a relatively low PSI to prevent surface damage.
- **DO NOT** use harsh cleaners and sealers with a PH Factor below 7 (i.e. bleach, all-purpose cleaners or soaps containing water soluble, inorganic, crystallizing or de-icing salts, harmful alkali or acids). These can damage the product.
- **DO NOT** use de-icing salts on the surface of the product in the case of snow buildup. If it is necessary to remove the snow with a shovel, only plastic head shovels should be used since shovels with metal heads could chip the surface of the product.
- **DO NOT** use sidewalk sweeper machines or abrasives.
- **DO NOT** use any sweeping compounds which contain oil because it can penetrate and permanently discolor the product. Many of these compounds also contain sand, which can abrade the surface if not removed.

## Surface Concerns

- Vehicles should never be driven onto hardscapes even temporarily for loading and unloading.
- If any minor surface abrasions occur, such as small scratches or nicks, resealing the surface will fill and conceal these areas.
- If there is any other surface abrasion, breakage, damage, graffiti or anomalies in the mural, please contact Creative Form Liners, Inc. immediately for consultation.

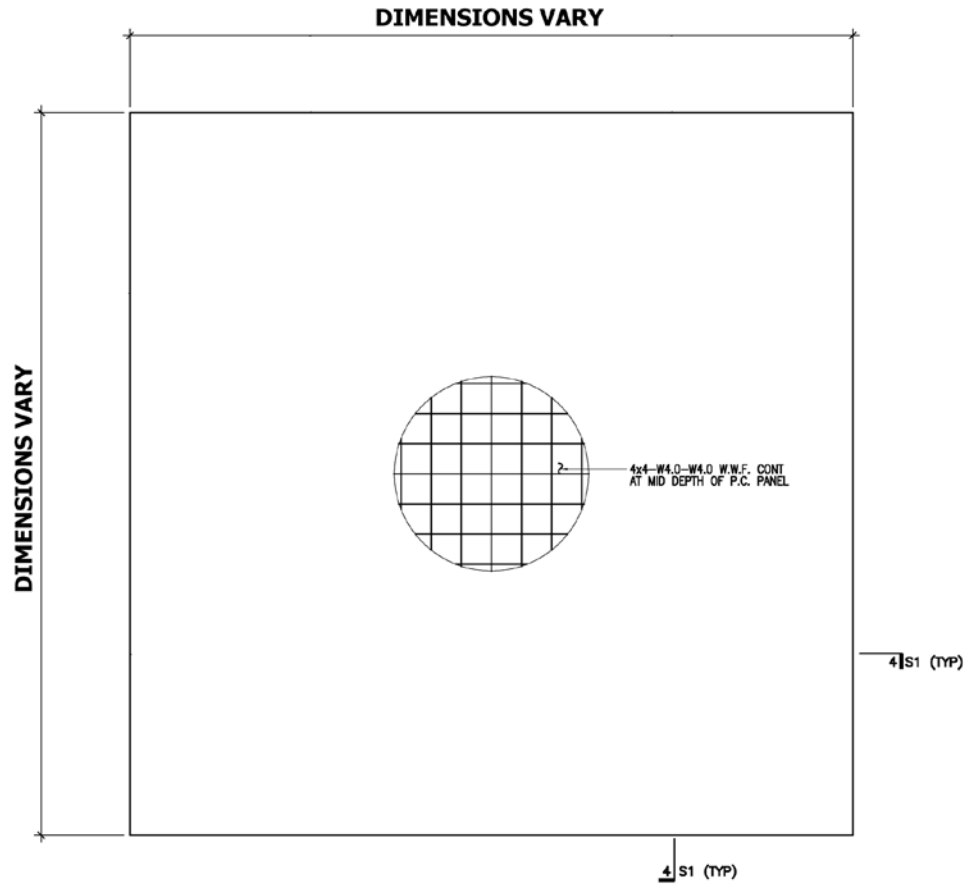
# Typical Architectural Wall Application



**SECTION 1-SK2**  
1"=1'-0"

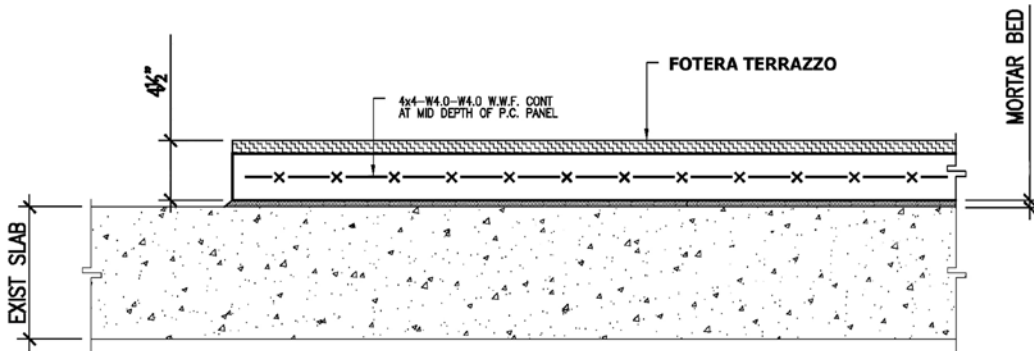
**FRONT ELEVATION 1-SK1**

# Typical Hardscape Application



## TYP TERRAZZO PANEL PLAN DETAIL 2-S1

1"=1'-0"



## SECTION 4-S1

1"=1'-0"