
CFL-SP002A: Bird Series



General Product Description

- Dimensions: 16' x 7' x 7.5"
- Maximum relief: approximately 3.0"
- Dimensions and surface textures may vary according to project specifications

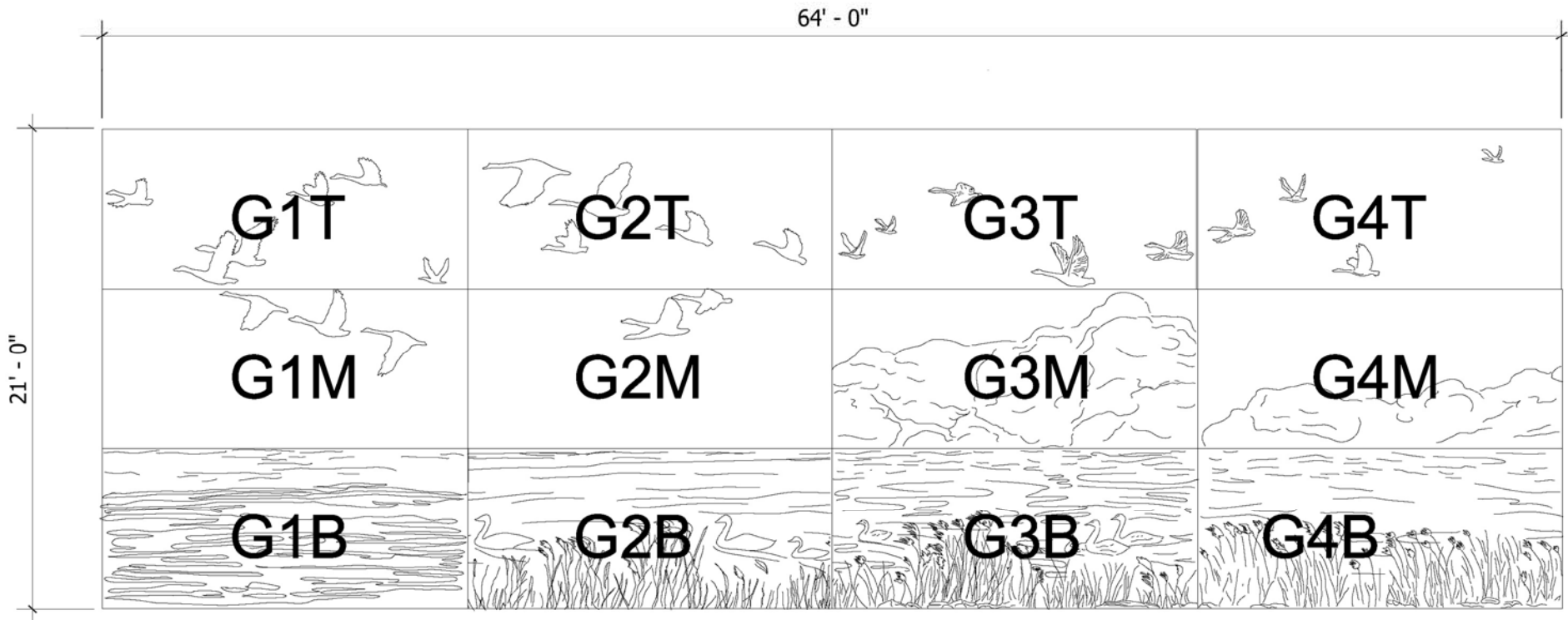
Fabrication and Installation

- All specialty liners are fabricated from fiberglass
- Fiberglass form liners shall be reinforced with wood or other suitable material on approximately 0.304m centers, or as otherwise specified; please see website or call for Typical Fiberglass Specifications

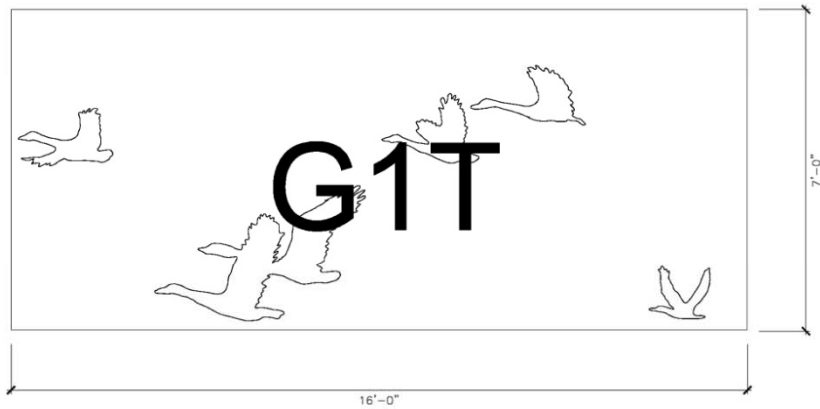
Release Agents

- Release agent must be approved and applied according to CFL's installation instructions

NO SUBSTITUTIONS WILL BE ALLOWED WITHOUT PRIOR WRITTEN APPROVAL FROM PROJECT ENGINEER OR ARCHITECT
Please contact CFL for full specifications and installation instructions for our liner products



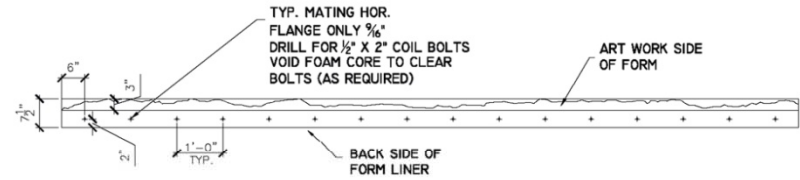
CFL-SP002A: Geese Series



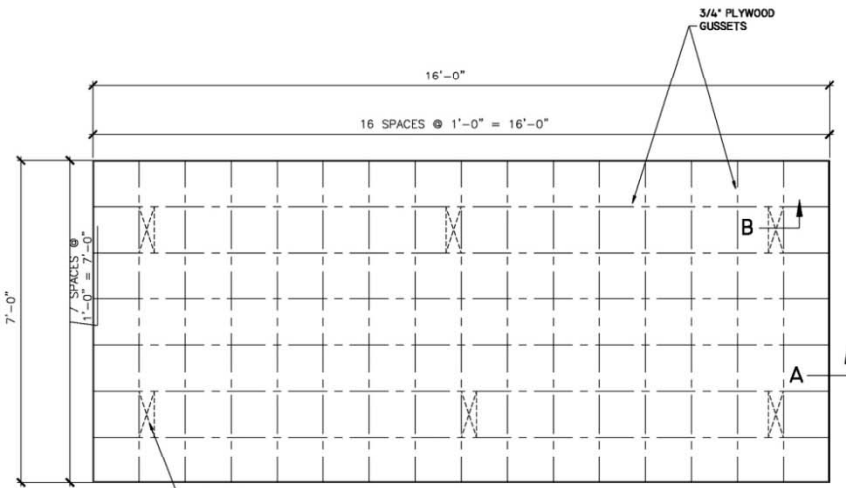
ARTWORK ELEVATION



SIDE OF LINER PLAN

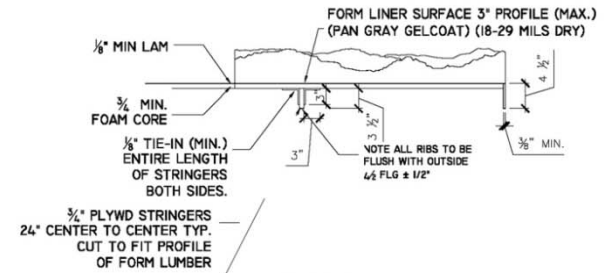


SIDE VIEW

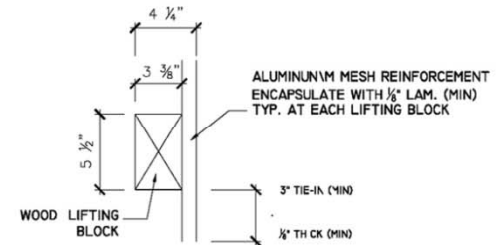


LIFTING BLOCKS. LOCATE IN APPROXIMATE LOCATIONS SHOWN. CUT BLOCKS AS NECESSARY TO CLEAR ART WORK

PLAN VIEW BACK



SECTION - A
TYP. SIDE EDGE SECT
SECTION - A



SECTION - B